



PerFect® TCS II Tissue Contouring System

Clinically Superior Results and Increased Productivity

- Exceptional cutting precision
- Stops bleeding quickly
- Fast healing

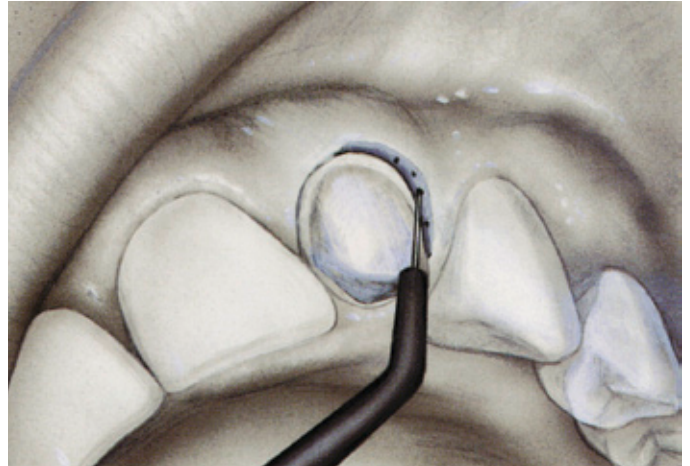
How to make everyday procedures simpler and clinically superior

PerFect® TCS II, a high frequency electro-surgery system, helps manage soft tissue with greater efficiency, greater precision and less bleeding than the common dental scalpel

- ▼ Removes unwanted tissue with ease
- ▼ Reduces chair time by simplifying operative procedures and maintaining hemostasis
- ▼ Provides outstanding cutting precision for superior clinical and aesthetic results
- ▼ Allows uneventful healing

Other clinical applications:

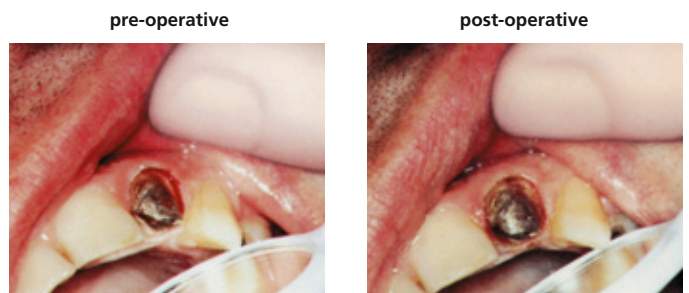
- ▼ Widening gingival sulcus
- ▼ Crown lengthening
- ▼ Exposing impacted teeth
- ▼ Incising abscesses
- ▼ Removing hyperplastic gingiva
- ▼ Frenectomy
- ▼ Stops bleeding



Using the Straight Knife electrode to stop bleeding in gingival sulcus

Control bleeding with a touch of the electrode

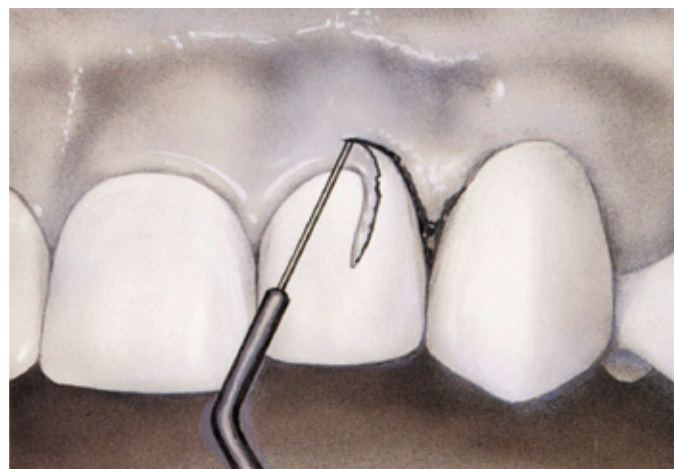
- ▼ PerFect® TCS II quickly stops bleeding caused by tooth preparation or cord placement with just a few dabs of the electrode
- ▼ The procedure continues without delay – no more waiting or extra appointments



Coagulation in gingival trough



Using the Long Loop electrode to remove occluding gingiva



Using the Straight Knife electrode to restore gingival symmetry

Gain access to caries quickly and efficiently

- ▼ With PerFect® TCS II, you can quickly remove gingival tissue occluding carious lesions
- ▼ Restorations – even with composites – may begin immediately because the operative field is blood-free

Contour tissue with unparalleled precision

- ▼ With PerFect® TCS II, you can shave fine, “paper-thin” layers of tissue even in hard to reach areas
- ▼ Facilitate impression taking, cementation, and aesthetic procedures by removing redundant tissue with little or no bleeding

pre-operative



post-operative



Subgingival access and visibility

pre-operative



post-operative



Aesthetic contouring of gingiva

PerFect® TCS II

Tissue Contouring System

PerFect® TCS II

The state-of-the-art electrosurgical system for precise and efficient tissue contouring

Solid state circuitry eliminates warm-up time

Waterproof footswitch for hands-free electrode activation

Single control for easy mode selection and intensity adjustment

Swivel cord connector improves handling

Dispersive electrode completes energy flow path



8 pcs. Autoclavable electrode sheaths

Ordering Information

| | |
|------------------------|---------|
| PerFect® TCS II | 230V |
| Cat. No. | S8230CE |
| | S8230UK |

| Included Components | Qty. |
|---|-------------|
| PerFect TCS II Unit 230V | 1 |
| Cord Assembly S6008CE | 1 |
| Electrode Set S7010A (S6011A, S6012A, S6015A) | 3 |
| Dispersive Electrode S213 | 1 |
| Footswitch assembly S5006 | 1 |
| Handpiece Holder S7001 | 1 |
| Introductory DVD | 1 |
| Step-by-step Owner's Guide | 1 |

| Cat. No. | Electrode Sheaths | Qty. |
|-----------------|-------------------------------------|-------------|
| S6010A | Complete Set S6011A thru S6018A | 8 |
| S7010A | Included Set S6011A, S6012A, S6015A | 3 |
| S6011A | Coag Ball | 2 |
| S6012A | 45° Straight Knife | 2 |
| S6013A | 45° Tapered Knife | 2 |
| S6014A | Straight Round Loop | 2 |
| S6015A | 45° Long Loop | 2 |
| S6016A | Straight Long Loop | 2 |
| S6017A | 45° Diamond Loop | 2 |
| S6018A | 90° AP 1½ | 2 |

Technical Data

| | |
|----------|--------------------|
| Measure: | 108 × 159 × 222 mm |
| Weight: | 2.4 kg |

www.coltenewhaledent.com
© 2010 Coltène/Whaledent

Coltène/Whaledent AG
Feldwiesenstrasse 20
9450 Altstätten/Switzerland
Tel. +41 (0)71 757 53 00
Fax +41 (0)71 757 53 01
info@coltenewhaledent.ch

Coltène/Whaledent Inc.
235 Ascot Parkway
Cuyahoga Falls, Ohio 44223/USA
Tel. +1 330 916 8800
Fax +1 330 916 7077
info@coltenewhaledent.com

Coltène/Whaledent Ltd.
The President Suite-A
Kendal House, Burgess Hill
Victoria Way
West Sussex, RH15 9NF/U.K.
Tel. +44 (0)1444 235486
Fax +44 (0)1444 870640
info@coltenewhaledent.co.uk

**coltène
whaledent®**